

# DeltaV™ v9.3 release—Easier than Ever!



## Availability

### Predictive Diagnostic PlantWeb Alerts with HART

PlantWeb® Alerts for HART® devices bring the full power of HART to help you avoid abnormal situations that can shut down your process.

### Unprecedented Scalability and Control Span

DeltaV™ Zones provide secure, real-time communications between independent DeltaV systems giving your operators single display access to the information they need to make better decisions more quickly.

### Analysis is a Snap with the DeltaV Reporter

Now you can report, track, and analyze historical data on Excel spreadsheets, even when operating on non-DeltaV equipment.

## Advanced Control Capabilities

### Intelligent Process Control with DeltaV InSight

DeltaV InSight is a breakthrough new product for intelligent control performance monitoring and adaptive tuning that automatically finds underperforming loops and calculates optimal tuning for every loop in your system! Embedded learning algorithms continuously monitor loop performance, diagnose problems, and calculate tuning based on normal day-to-day operations. No disruptive plant tests are required to improve your control performance.

DeltaV InSight is Emerson's next generation product replacing DeltaV Inspect and Tune. DeltaV InSight includes all the basic monitoring and tuning capabilities of its predecessors, then adds the advanced diagnostics and adaptive tuning made possible by embedded process learning. A new user interface provides seamless transition between loop diagnostics and tuning, and automatic configuration saves time

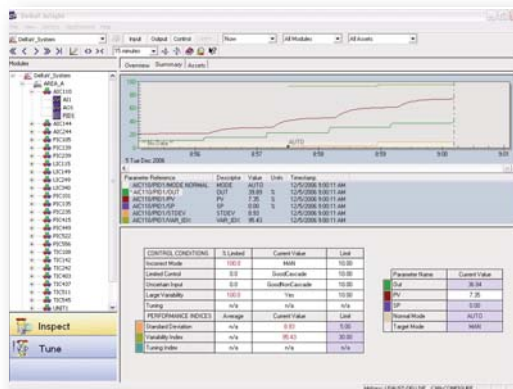
and money during system startup and maintenance.

### Improved Advanced Control with Historical Data Status

Improve the accuracy and reliability of your DeltaV advanced control by automatically excluding bad or questionable data accessed from the DeltaV Historian.

### Enhanced Operator Training with SimulatePro Playback

DeltaV SimulatePro now allows you to record and play back simulation sessions for enhanced operator training. Instructors can now save, restore, and review training sessions to evaluate or correct operator entries during various operating scenarios.



## Data Management

### Get More Data with the DeltaV Continuous Historian

Increase your historical data analysis capacity by collecting up to 30,000 tags in the DeltaV Continuous Historian.

### Solve Your Maintenance Problems with Continuous Historian

#### AutoSync

Keep your enterprise historian up to date with the DeltaV v9.3 enterprise



For complete product information, visit [EasyDeltaV.com/Version9.3](http://EasyDeltaV.com/Version9.3)



historian collection option, where Continuous Historian configuration data may be automatically synchronized with the enterprise historian interface.

### Robust Event Chronicle

A new and improved event database is available with the v9.3 Event Chronicle. It has been updated to a Microsoft SQL Server database which provides increased robustness, reliability, security, and event storage capacity.

## Smart Plant Capabilities

### Full AMS™ Suite: Intelligent Device Manager Embedded

Cash in on new functionality with the AMS Device Manager while keeping your FOUNDATION™ fieldbus experience seamless in the DeltaV system. FOUNDATION fieldbus and HART smart field devices, now with one common user interface, support the open, interoperable EDDL standard for device diagnostic displays.

### More Function Block Choices for FOUNDATION fieldbus Applications

The best FOUNDATION fieldbus solution gets even better! Harness the power and functionality of many standard DeltaV function blocks in your FOUNDATION fieldbus control-in-the-field applications—all executable in the Series 2 FOUNDATION fieldbus H1 Interface Card. They're fully synchronized with the function blocks running in the field devices on the H1 segment, eliminating communication delays.

### More FOUNDATION fieldbus Function Blocks

With 96 FOUNDATION fieldbus function blocks per DeltaV H1 Interface Card (up from 64), control strategy deployment gets even easier! Now you can assign up to 64 function blocks to FOUNDATION fieldbus devices and up to 32

function blocks to the DeltaV H1 Interface Card.

### More Efficient FOUNDATION fieldbus Control Loop Scheduling

Now you can run fast and slow control loops concurrently on the same FOUNDATION fieldbus segment without affecting the execution speed of the fast control loops.

### Smart Plant Capabilities Extended to Remote I/O

Now, Remote I/O has the same HART capabilities as local I/O—providing you with the same predictive diagnostic capability as your local loops to ensure reliable operation and improved process up-time.

## Ease of Use

The license for Batch Operator Interface (BOI) is eliminated in DeltaV v9.3 software allowing you to launch the BOI application from any operator station in the system. Licensing has been further simplified in DeltaV v9.3 software with the elimination of the Serial Port license. Serial ports are now available simply by purchasing the Serial I/O Interface Card and its termination block.

### Simulation Licensing Enhancements

DeltaV v9.3 provides improved license enforcement for offline engineering and/or operator training systems, eliminating the need for annual renewal of system access keys.

### Dependable Document Management

The powerful DeltaV Version Control and Audit Trail (VCAT) application now provides version control and change management for virtually any file type making version management of everything from SOPs to P&IDs easy.

## Guardian Support

Guardian Support now provides information views for all systems at a location and for all locations in an enterprise, a new dashboard tile for Guardian information updates, and other improvements to simplify your process management.



## Batch

### New Batch Controls Mean Enhanced Operator Experience

It's easier to operate batches and view your process at the same time in the DeltaV Operate environment using the new controls Procedure as Flow Chart (PFC) and Manual Phase Control.

### Completely Integrated Batch History for Manual Phases

In one click you can associate the history of a manually added phase with an existing batch's history making it easier than ever to view the history of an entire batch in the Batch Historian.



The DeltaV™ system is a core component of the PlantWeb® digital plant architecture.

©2007, Fisher-Rosemount Systems, Inc. All rights reserved. The Emerson logo is a trademark and service mark of Emerson Electric Co. DeltaV, the DeltaV design, AMS and PlantWeb are marks of one of the Emerson Process Management group of companies. All other marks are the property of their respective owners.

[www.Experitec.com](http://www.Experitec.com)



For complete product information, visit  
[EasyDeltaV.com/Version9.3](http://EasyDeltaV.com/Version9.3)

