

PERFORMANCE SERVICES

Your Secret Weapon To . . .

- **Reduce Maintenance Costs**
- **Improve Process Throughput**
- **Minimize Product Variability**
- **Reduce Utility Costs**
- **Maximize Process Uptime**

What Our Customers Say

EOG - "I explained to another vendor that his products are valuable to our success, but that we NEED Experitec as a partner in our success. We would not be where we are without Experitec."

Dyno Nobel - "I have a great relationship with Experitec and the service providers. We depend on them and they have brought technology to the plant that we never have had before. Their experience and knowledge of technology have brought significant operational improvements that translate into business improvements."

Bayer CropScience - "Experitec is a true partner. They augment our capabilities and step in when and where we need them. Experitec engineers (Bruce Wallace, Ben Beebe and Steve Thomas) assist us to ensure proper support to our plants."

National Starch - "Experitec provides us access to multiple skill sets required to augment our own. Their contract approach to provide access to their talent is truly a win-win arrangement."



We Bring Experience and Technology to Plant Engineering

DCS/PLC/MMI Engineering: Experitec's certified staff have extensive experience in engineering control solutions, from a simple continuous process to a complex batch process. We follow a Project Execution Process that has proven success in giving the customer the best engineered solution.

Instrument Engineering: Experitec can evaluate your current instrumentation to determine if it is the best solution for the application or we can engineer a brand new system. We have extensive experience in custody transfer, ISO calibrations, flow, pressure, and temperature instrumentation along with a variety of analytical instruments. This is a broad service that can include identifying all instruments within a plant or process area. After identification, a database can be setup using AMS, Honeywell AIMS, or any database owned by the customer which will include all pertinent instrumentation information. Standard Operating Procedures can be written and Experitec can train the instrumentation technicians on calibration and maintenance procedures of the instrumentation.

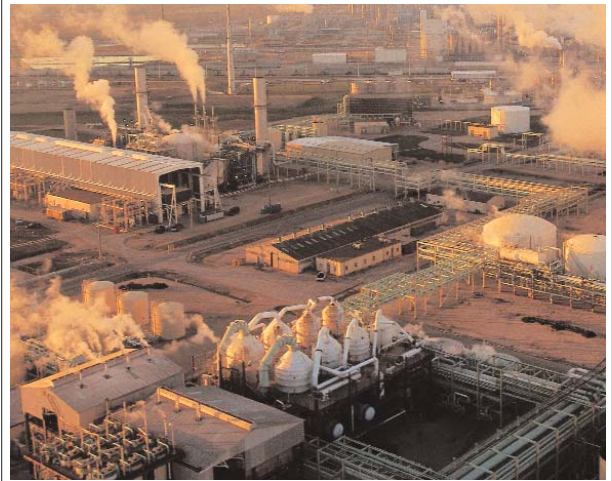
Loop Performance Services: This service ranges from tuning of control loops, identifying opportunities for better loop control, to implementation of advanced control such as Model Predictive Control, Fuzzy Logic, and Neural Networks.

Outage Management: This service provides the planning, coordination, and execution of maintenance repairs and system enhancements during a scheduled plant outage.

Process Information Support: This service provides the customer with technical support for both their Host Computer Systems and Plant Local/Wide Area Network Systems.

Educational Services: At Experitec, we understand you may want to be the first line of defense on any process control problem. To help train your staff, we offer an array of courses to fit your needs. The courses can be geared anywhere from the inexperienced technician to the experienced engineer.

Web-Based Information Delivery: Using Experitec's trained staff, we can provide information from your control system to your plant's intranet using a customizable web look and feel.



Proven Results

Waste Treatment Facility - Re-agent cost savings of \$100,000 per year. Improved system reliability and reduced maintenance cost.

- 2-Stage Reaction System treating plant effluent stream
- Control system variability costing \$100K per year in lost Chemical re-agent
- Re-engineered and installed four new control valves
- Implemented advanced control scheme (error-squared algorithm)
- Optimized deadtime dominant interacting re-agent control loops

Plant Startup Optimization - Sold out unit typically shuts down twice a day and takes 2 hours to ramp up to full production rate.

- Implemented advanced control scheme. Cascaded on inlet flow, pH, level and outlet flow of the Reactor reducing the start-up time to 30 minutes, thus increasing unit production, and returning an estimated \$4 million in gross profit per year.

Experitec, Inc.
504 Trade Center Blvd.
Chesterfield, MO 63005

Phone: 636.681.1500
Fax: 636.681.1550
www.experitec.com